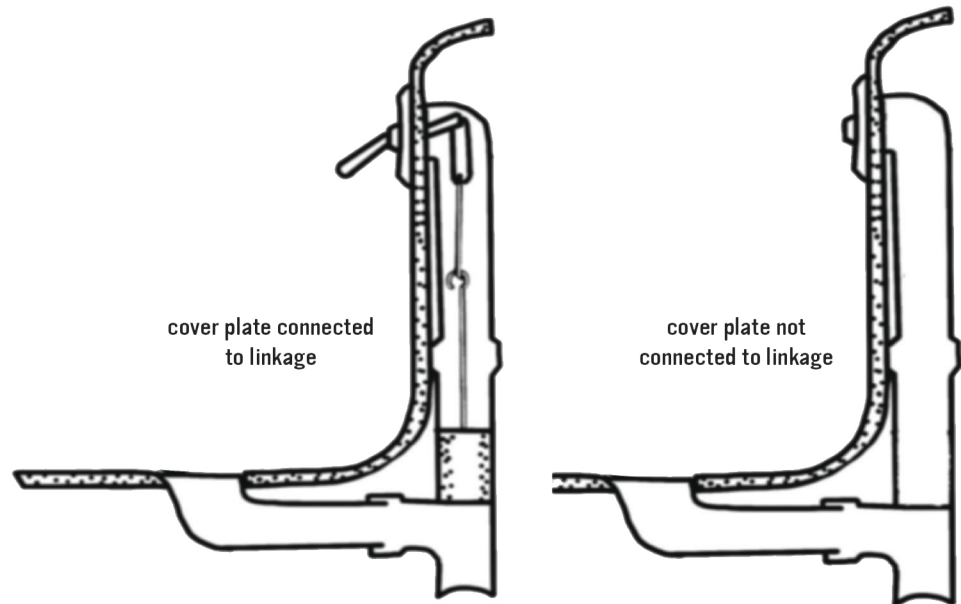
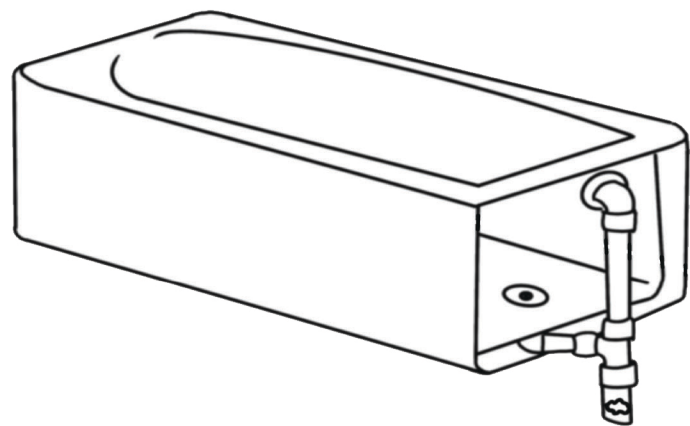
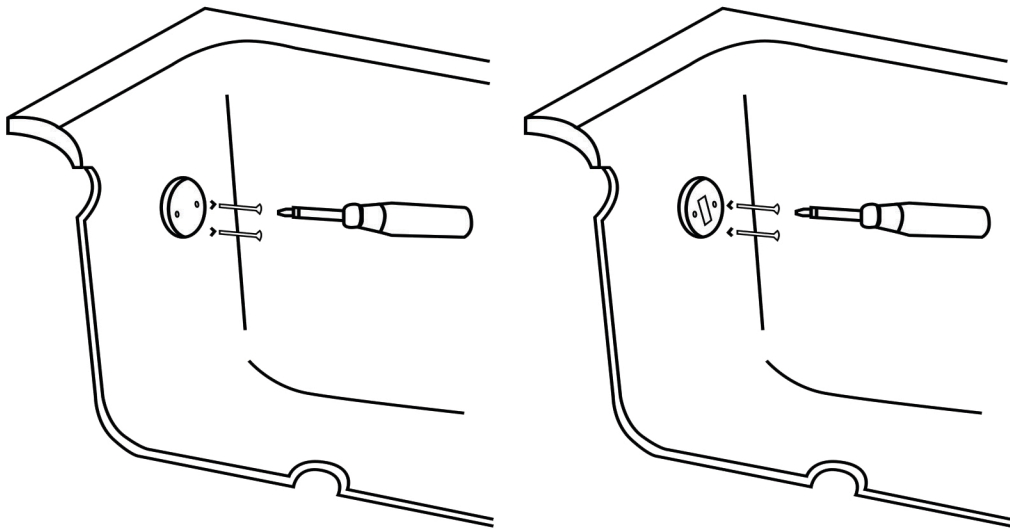


# TUB PLUG

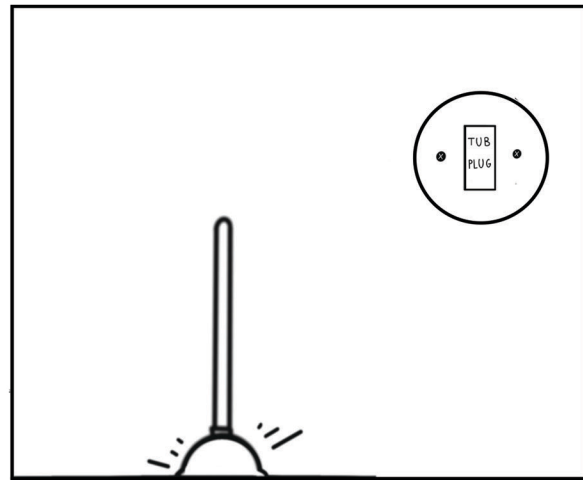


If cover plate is connected to linkage remove full linkage assembly with cover plate

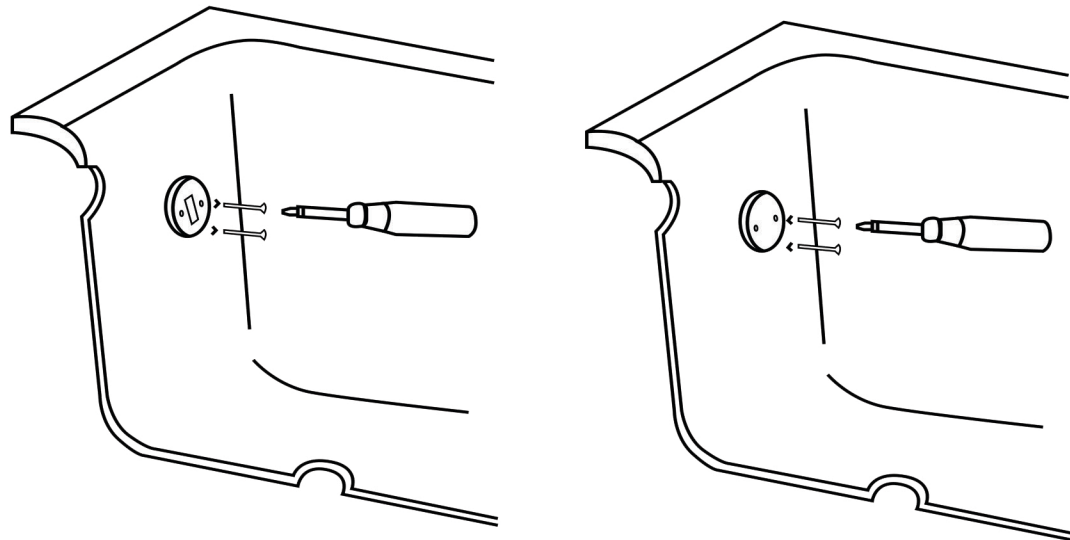
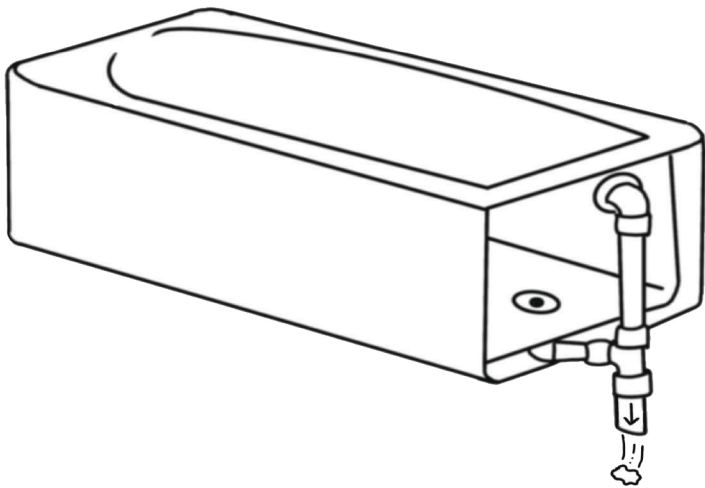
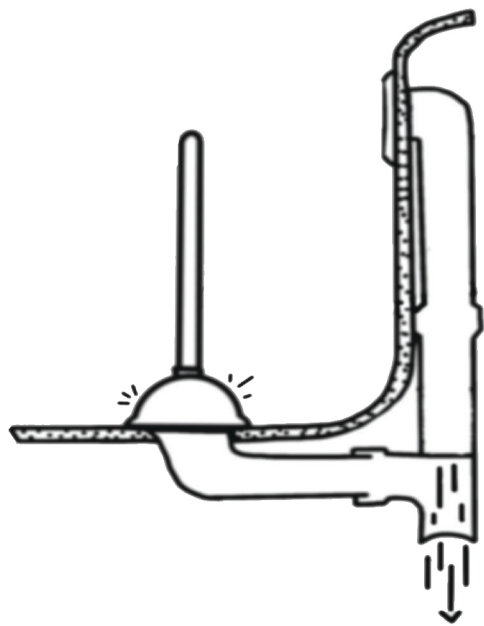
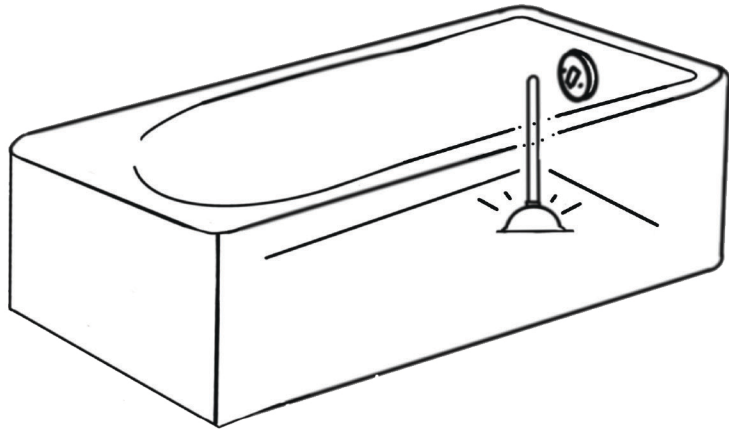
Step 1: Remove cover plate by unscrewing screws holding it in place.



Step 2: Install Tub Plug with screws from cover plate



Step 3: Plunge tub. Downward pressure created from suction will push down clog( In the event the clog comes up to drain opening use needle nose pliers to remove)



Step 4: Remove Tub Plug reinstall cover plate